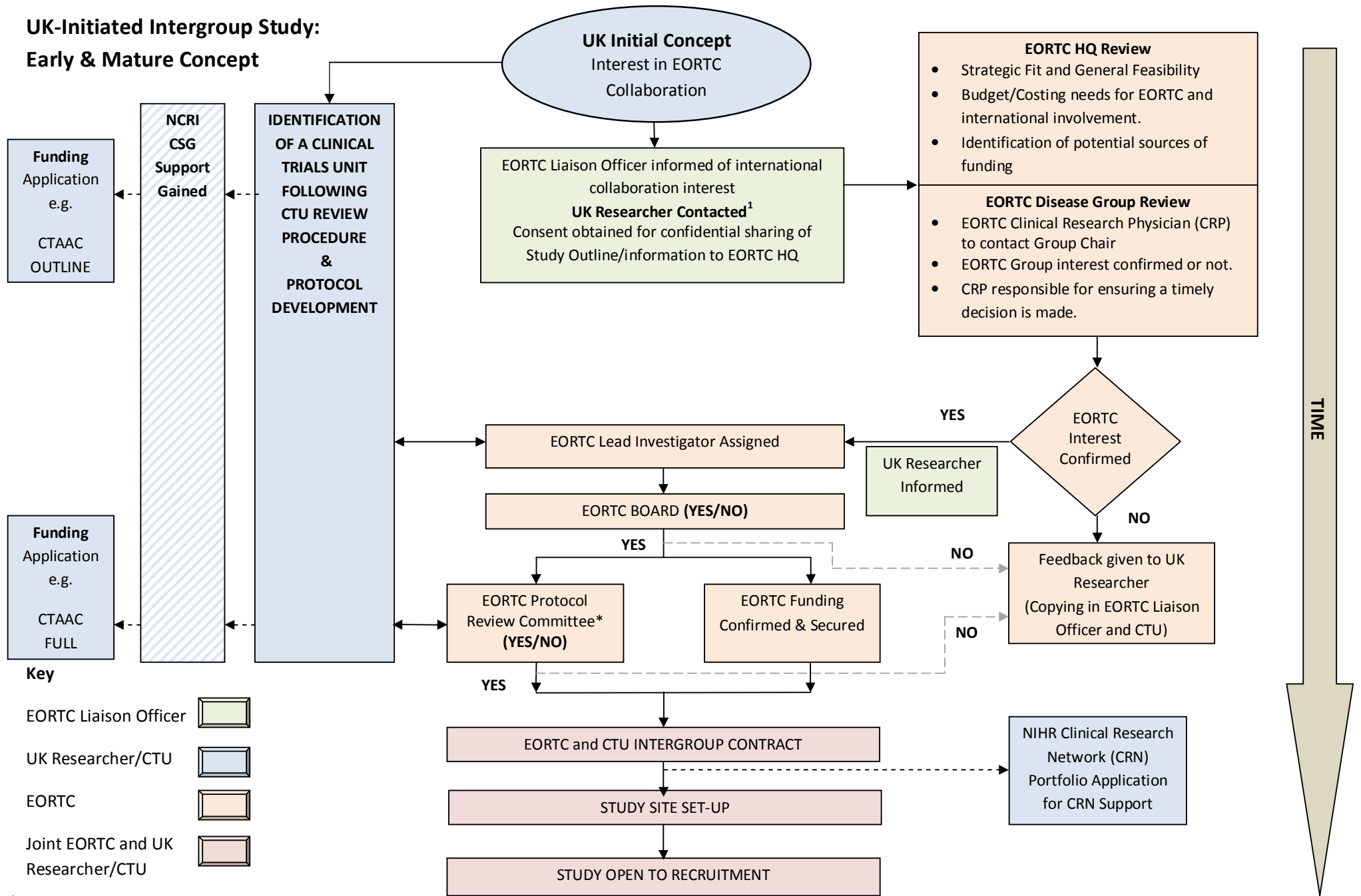


UK-Initiated Intergroup Study: Early & Mature Concept



¹ Topics for discussion: Requirement for collaboration and any current plans/links with national groups, Identify names of EORTC contacts already contacted and/or linked, Study Timelines – funding plans, Study Design, Patient Numbers, Funding identified, CTU Involvement

*For further information relating to the steps associated with the Protocol Review Committee, please see <http://www.eortc.org/about-us/management-structure/committees/protocol-review-committee>

Condition of Use Statement - Every collaboration interest pursued via this pathway will be subject to Terms and Conditions specifically relating to confidentiality via the Confidentiality Framework.